

# *The Cosmic Feminine Lilith in Four Octaves*



*An Invitation to Deeper Resonance in Your Life  
Exploring Dimensions of Feminine Consciousness*

***M Kelley Hunter, Ph.D., C.A.P.  
Astro-Mythologist***

*Author of Living Lilith: Four Dimensions of the Cosmic Feminine  
and Black Moon Lilith*

# LILITH and the PRIMORDIAL FEMININE

*"You wonder: Who am I, coming at you like your shadow?  
Like a bird in flight in the dark of the night?"*

In our twenty-first century renaissance, a re-arising of the feminine has brought many faces of the goddess into modern awareness. Lilith is one of the most alluring— and ancient. After five thousand years of smoky rumors, this female of ambiguous reputation remains a mystery. As seductive femme fatale, crib death hag or cosmic goddess, vampire or beacon of female integrity, she has continued to excite our cultural imagination.

If we follow her trail back in time to seek the source of the fear and negativity she typically evokes, we often discover, not only a major shift in the collective human image of the feminine, but also something essential that needs to be redeemed in our personal lives.

Not everyone is ready to explore such profoundly unknown dimensions of self and experience. Is she calling to you?

Of increasing interest to astrologers, Lilith is the name given to four astronomical points — an asteroid, a star, a dark "ghost" moon, and the better-known Black Moon.

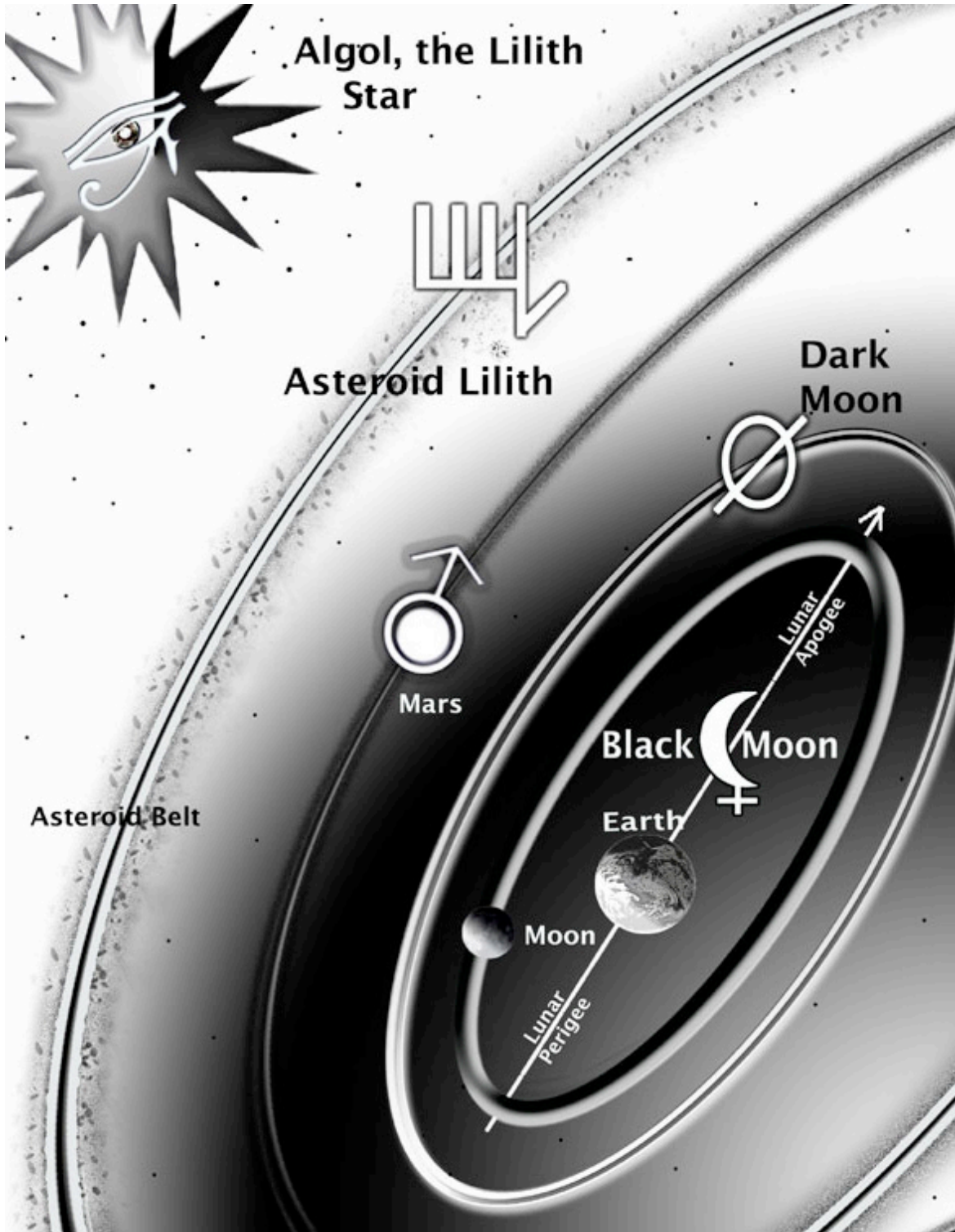
This booklet gives an introduction and clarification of the different 'dimensions' of Lilith in astronomy/ astrology. Like the same musical note in different octaves, the four Liliths resonate with the same vibration, carrying her various mythic themes.

We can explore ways to distinguish the differences between these Lilith points, but she follows no rules. We talk of these four Liliths to understand her evocative enigma from various angles and perspectives; however, most essentially, it is directly in your most personal experiences that you perceive Lilith in your life. She speaks to you in a 'language' only you can hear as she whispers from the depths of your soul.

See more about the Cosmic Feminine @ <http://heliastar.com/cosmic-feminine/>

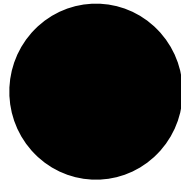
# LILITH in ASTRONOMY

Black Moon, Dark (Shadow) Moon, Asteroid & Star





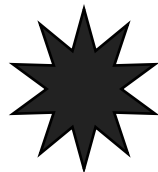
**ASTEROID #1181**, "Hard Rock" Lilith,  
in the asteroid belt between Mars and Jupiter  
Orbit = 4.36 years around Earth & through zodiac



**DARK MOON**, controversial shadowed satellite of Earth,  
Orbit = 119 days around Earth & through zodiac  
a.k.a. Waldemath Moon  
(for astronomer who announced its existence in 1898;  
named Lilith by astrologer Sepharial in 1918)  
re symbol: imagine a diagonal line cutting through the circle a la 'ghost busters'



**BLACK MOON**, second focal point of Moon around Earth,  
Orbit = 8 years, 10 months around Earth and through zodiac.  
Its motion is not constant and is measured in different ways.



**Fixed Star ALGOL** in the constellation of Perseus at 26 Taurus.  
Fixed stars stay in the same zodiac degree for about 72 years.  
This Greek hero is pictured holding the severed head of the Medusa.  
Algol marks her Eye, that could turn people to stone.  
This star was also known as Lilith by the Hebrews

## LILITH in MYTHOLOGY & ART



### **The QUEEN of NIGHT**

C. 1800 B.C. clay plaque from Iraq in The British Museum, an image long associated with Lilith, recolored in original tones

**Lilith is often associated with serpents and trees**

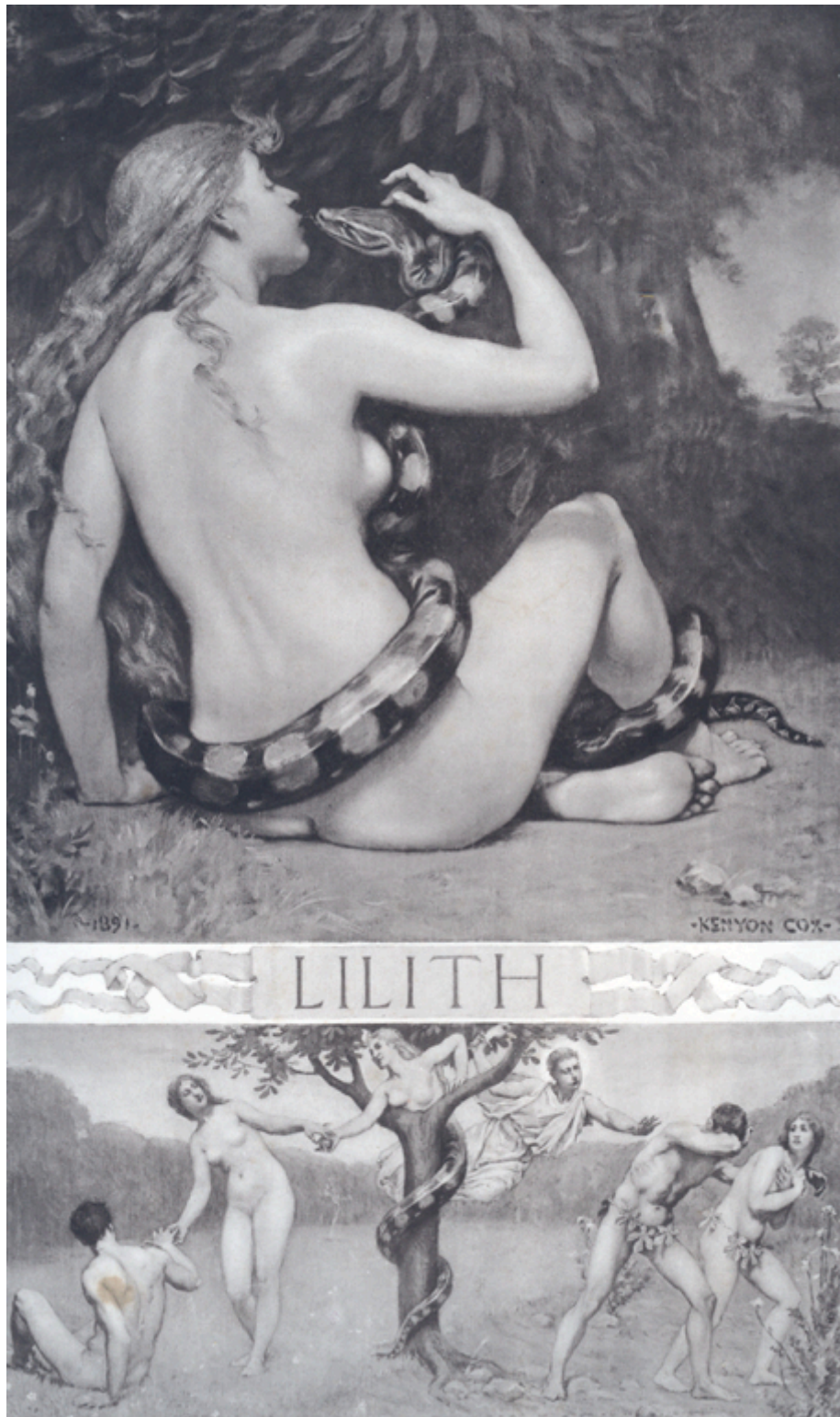


Sculptured scene on column at entrance to Notre Dame Cathedral, c.1100

### **LILITH STORY in GARDEN of EDEN**

Lilith was rumored to be the first wife of Adam, who left him and then came back as the woman-headed serpent who gave the apple to Eve

Lilith became very popular in the 1800s,  
influencing many artists and writers



LILITH by Kenyon Cox, 1892

**Lilith was known as a beautiful seductive witch,**  
mentioned by Goethe in his 19th century classic, Faust



Lady Lilith by Dante Gabriel Rossetti, 1864

*"It was Lilith the wife of Adam...  
Not a drop of her blood was human,  
But she was made like a soft sweet woman...  
In the ear of the Snake said Lilith...  
'To thee I come when the rest is over;  
A snake was I when thou wast my lover.'"*

--D.G.Rossetti

## ASTEROID LILITH, #1181



**Lili Boulanger, 1893-1918**

**Susan B. Anthony/ Elizabeth Cady Stanton**

Asteroid Lilith is a tiny rocky planetoid in the asteroid belt between Mars and Jupiter. The only physical Lilith, perhaps she has most to do with our daily earth-based lives, often associated with social issues connected to gender bias, women's autonomy, and the questioning of social norms.

The asteroid is named for award-winning French musical prodigy Lili Boulanger, whose brilliance broke through the bias against female composers. She wrote more than 50 works in her short life. She took the nickname Lili in reference to Lilith.

Susan B. Anthony and Elizabeth Cady Stanton were pioneering Americans leading the movement for women's right to vote. Just over 4 years different in age, they both had Asteroid Lilith conjunct revolutionary Uranus in Sagittarius.

## DARK (Waldemath) MOON LILITH



The Blue Circus, Marc Chagall, 1950-52

The rumored Dark Moon, a shadow-absorbing satellite of Earth, may be real or not, perhaps it is astral, trailing dusty karmic cobwebs that bind the soul. It opens 'OtherWorlds' that mirror the 'real' one— esoteric dimensions, worlds of the imagination, the realm of Faerie or of ghosts, vampires and night mares, stirring fears, wonder or altered perception, as in Alice Through the Looking Glass or down the rabbit hole.

*Cold-hearted orb that rules the night,  
Removes the colors from our sight  
Red is grey and yellow white,  
And we decide which is right  
And which is an illusion?*

--Moody Blues, "Nights in White Satin"

The impersonal Dark Moon Lilith denies personal satisfaction, rather pushes raw subjective experience into uniquely creative, spiritual or social/collective expression. Many artists explore the shadowy territory of the psyche. Some express the agony and ecstasy of the human spirit; some get lost in the dark.



Night photograph with orbs, Lilli Farrell

***"Can that be true that loves the night?  
The darkness is the nurse of light.  
Can that be true which mocks at forms?  
Truth rides abroad in shapeless storms."***

--George MacDonald, The Shadows

## BLACK MOON LILITH

An aetheric vortex, Lilith Black Moon is essentially tantric, infusing mundane experience with the divine. Life is inherently sexual; the erotic force is best expressed with creative power and spacious consciousness. Dakini-like wisdom transmitter, she invites us into transparent spaces beyond ego control. Essential 'ego-buster,' she is therefore demonized.



*"This is a state of starless midnight  
a state of translucence or transparency  
that is beyond dark and light.  
This is radiant black."*

--China Galland, Longing for Darkness

***Awaken, O thou whom my soul loveth, and come,  
Come into my garden, where the spices flow out.  
Come into your garden and eat the pleasant fruits.  
Set me as a seal upon thine heart.  
--taken from the Biblical 'Song of Solomon'***

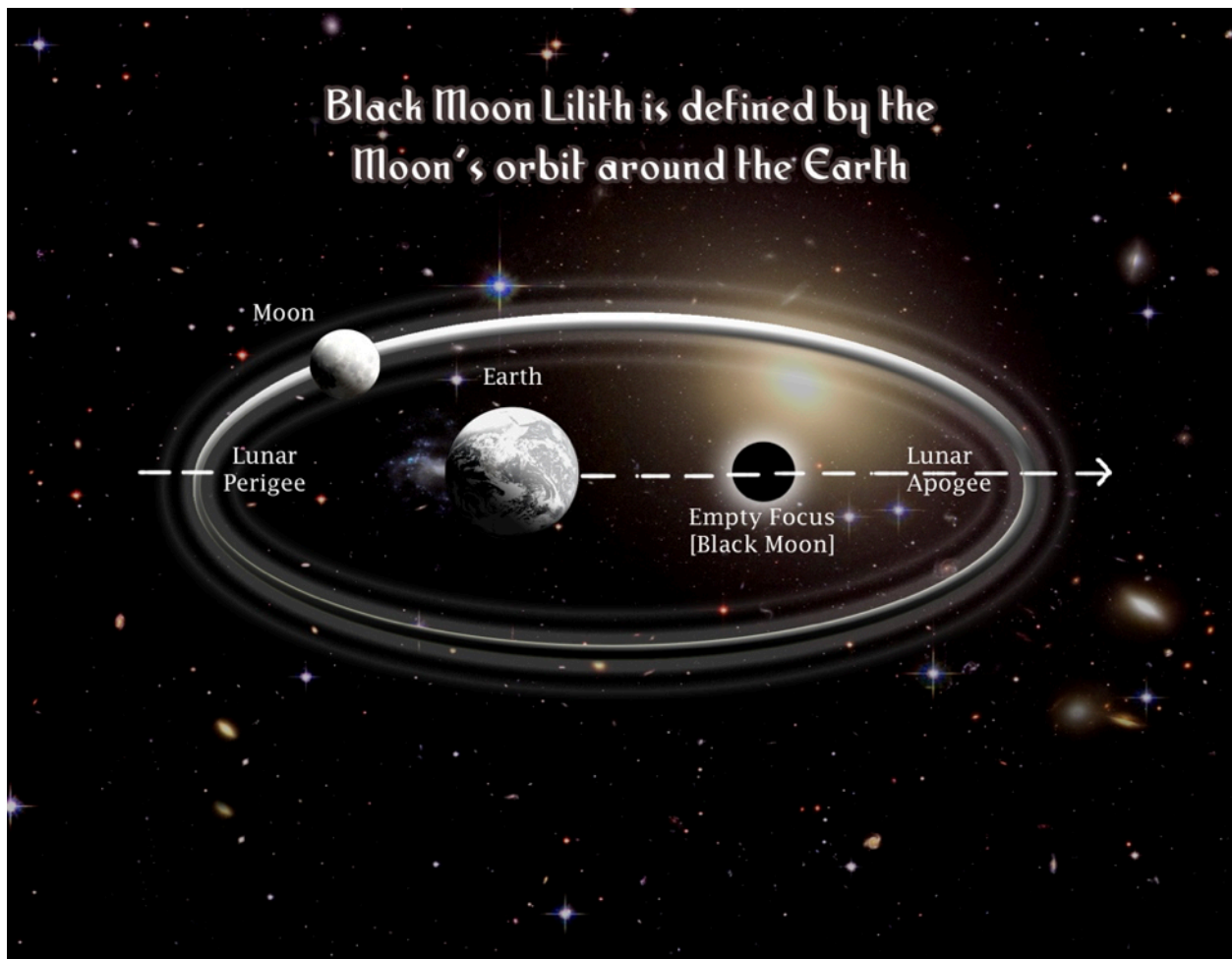


***She is "the shadowy side of our power, the power that has not yet been tamed and put to use in the service of our greatest personal gifts.... Lilith is a side of feminine power with which we must reckon. When she is repressed or dominated, she becomes desperate, enraged and insane. When she is acknowledged and loved for her fire, she becomes a source for positive creation. Tracking our Lilith nature is the key to our spiritual awakening."***

***--Rabbi Lynn Gottlieb, She Who Dwells Within***

## BLACK MOON ORBIT

The Black Moon is not a body, but a mathematical point that defines the second 'focal point' of our Moon's elliptical orbit around Earth. In effect, it aligns with the Moon's apogee, its furthest point from Earth, as if taking us to the dark side of the Moon that always faces the stars. The Black Moon is intimately involved in the Earth-Moon orbit. The Moon is the mother's womb that births the soul into physical incarnation on Earth. The Black Moon is the deep desire that brings the soul to seek life.



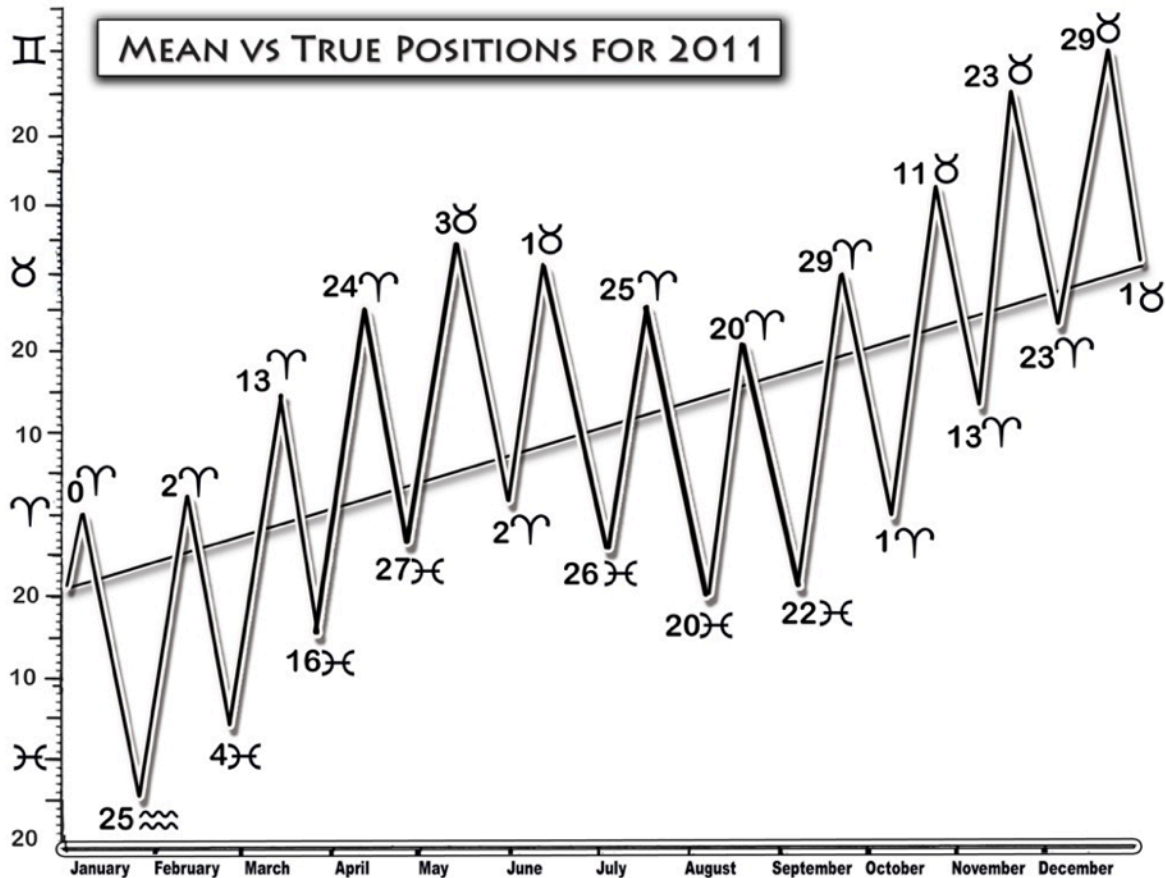
*"It is as though the moon  
threw down a black body upon earth  
visible only to the subliminal senses,  
which thereby became illuminated."*

--Peter Redgrove, The Black Goddess and the Unseen Real

## MEAN and TRUE BLACK MOON

The orbital motion of the Black Moon is not constant, as the Moon's speed and distance from Earth varies. The Black Moon focal point is measured in two ways: more easily by **mean, average motion** and also by **true motion** which often retrogrades. The chart below illustrates typical movement of the two.

The **Moon's Nodes**, marking eclipses and called **the Line of Destiny**, are also measured these two ways, a degree or two apart. The difference between the two Black Moon positions can be much greater, up to a full 30 degrees or more. It is not unusual to have your Black Moon in **two different signs and two different houses**, adding complexity to our experience and astrological interpretation. Are yours pinpointed very close together? or creating a wide 'corridor' of Lilith vibratory affect? The Black Moon orbit of 8 years, 10 months, is half of a nodal cycle, intimately involved in revealing areas of karmic bondage, offering a potential opening of consciousness to resolve unconscious patterns and free our souls for spiritual union.



## ALGOL, the LILITH STAR



*MEDUSA*, clay sculpture on Tyre palm leaf, by author

The paralyzing EYE of Medusa penetrates

***"with an objectivity like that of nature itself and our dreams, boring into the soul to find the naked truth, to see reality beneath all its myriad forms and the illusions and defenses it displays."***

--Sylvia Perera, Descent to the Goddess

# CONSTELLATION PERSEUS



from The Witness of the Stars, by E.W. Bullinger

***"...the Gorgon's head, a ghastly sight,  
Deformed and dreadful, and a sign of woe."***

--Homer's Iliad

## The EYE of MEDUSA



Web Collage by Dana Hunt

**Is the Eye of Medusa looking at you? Do you look out through her Eye?**  
The star name 'Al Gol' means 'the demon' from the Arabic. It has a negative and dangerous reputation, auguring violence, disasters and death, especially beheadings. Astrologer Bernadette Brady associates this star with the rage and grief of women [and traditional peoples] for millennia of patriarchal subjugation, suppression and repression of women and feminine wisdom. Because a star circles slowly through the zodiac over 26,000 years, its implications engage multiple generations in shared level of experience, evoking collective memory and a call to participate in these issues. Such a journey taps our inner core strength and may feel like being pulled through a black hole. Feelings of vulnerability, rage, despair, rejection and isolation are stirred up. As if on an archaeological dig, layer after layer is uncovered and reclaimed as we sift through the dirt and ruins that have buried the soul and come home to ourselves. Committing to deeper spiritual aspects of the Self may at times appear like betrayal to others. Lilith says, "It is as it is."

## LIVING LILITH: Four Dimensions of the Cosmic Feminine

excerpt, pp.171-172, published by The Wessex Astrologer

"It's a big dose of Lilith to include all positions in your chart at once. It can take some time to unwind her meaning in your life. Over my years of study, I have been delighted, dismayed and distressed, surprised, shocked and exasperated by the way Lilith works with me. She came at me from odd angles over the course of years— first, the George MacDonald book [*Lilith*], as I remember it, though memory is variably suspect. I became vaguely aware of the asteroid first, I think, because of the publication of *Asteroid Goddesses* [by Demetra George and Douglas Bloch] in 1986. Back then, I was giving my attention to the "more important" largest four asteroids.

"When I walked into my first Black Moon lecture by Marc Beriault in 1987, true Black Moon was transiting my natal Moon. I was certainly interested in such a dark goddess, but she just gave me a knowing wink at that point. I did not get pulled in yet. Perhaps it was the confusion about having two sign placements. I do still have my lecture notes, with key phrases of "independence, laser-like penetration, enforced lucidity, perception of non-physical reality through the senses, the yang that comes out of the yin."

"I zeroed in on Delphine Jay's books [*Intepreting Lilith*] at a monthly meeting of the American Society of Dowzers at its headquarters in Vermont. I had been invited to speak to the group about Astrology and was able to participate in an experiential lesson in using dowsing rods to locate an invisible door that had been "placed" on the grounds. I was having a bit of trouble, so an old timer took my hand and charged me with dowsing ability, as he said. It worked; an effective transmission. Even then Dark Moon Lilith was inviting me deeper into the subtle energy fields. The experiential context of Lilith is the real essence of her revelation....

"The Lilith star took a couple of times to penetrate into my awareness (thank goodness, thank goddess). I had to read Richard Hinckley Allen's book, *Star Names, Their Lore and Meaning*, more than once to have the Lilith connection sink in. Even when I underlined the Lilith reference, I didn't remember it by the time I looked at the book the next time. It wasn't until after the passing of Hyakutake and Hale-Bopp [1996-97], the two comets that criss-crossed at Algol. I was starting to do regular star gazing, and became interested in the Andromeda story. Then I truly looked and saw that star....

**"When was it that I found myself looking around at all four Liliths? I can't really say. Silently and seductively sliding close, serpent-like, through dreams and drama, there she was, not suddenly, smiling in the center."**

## Locating Lilith

A number of websites offer various means of locating your Liliths.  
Here is the one that I have always used:

**[www.astro.com](http://www.astro.com)**

This Astrodienst website has tables for all five Lilith positions.

After entering chart data:

choose **Extended Chart Selection** under **Horoscope Chart Drawings**

For **Asteroid Lilith** (shown as **Lilit**), insert **1181**

In the space for “additional asteroids”

For **mean Black Moon**, choose **LILITH** from list of “Additional objects”

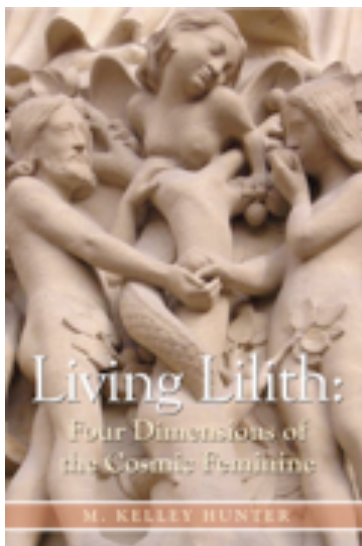
For **true** oscillating **Black Moon** (shown as **osc**), insert **h13**

For the **Waldemath Dark Moon** (shown as **walde**) insert **h58**

For **Algol** (shown as **ALG** in late Taurus), insert **Algol**

\*For additional **Asteroid Medusa** (shown as **Med**), insert **149**  
[for those particularly interested or with a strong **ALGOL** position]

**Further research shared in my books on Lilith:**  
**Living Lilith: Four Dimensions of the Cosmic Feminine &**  
**Black Moon Lilith**



See more about the Cosmic Feminine @ <http://heliastar.com/cosmic-feminine/>

## Lilith in Your Chart

List your Lilith positions and start tuning in to your experience with her.

My Asteroid Lilith sign/house position \_\_\_\_\_

Notes: \_\_\_\_\_

\_\_\_\_\_

\_\_\_\_\_

My Dark Moon Lilith sign/house position \_\_\_\_\_

Notes: \_\_\_\_\_

\_\_\_\_\_

\_\_\_\_\_

My Black Moon Lilith sign/house position(s)

Mean Black Moon \_\_\_\_\_ True Black Moon \_\_\_\_\_

Notes: \_\_\_\_\_

\_\_\_\_\_

\_\_\_\_\_

My Lilith Star Algol position \_\_\_\_\_ in Taurus/ in house \_\_\_\_\_

Notes: \_\_\_\_\_

\_\_\_\_\_

\_\_\_\_\_

*I am always excited when requested to do a Lilith reading, to explore with you various dimensions of her complex mysteries, allowing our dialogue to discover and illumine the ways she shows up in your life.*

<http://heliastar.com/services/consultations/>



M. Kelley Hunter, Ph.D., C.A.P., is an internationally respected astrologer and mythologist. Studies in archetypal psychology, holistic healing, unified field physics, and over 1001 stargazing nights enrich her teaching and consultation work. She is author of two books on Lilith, [Planetary Gods and Goddesses Coloring Book](#), and contributor to the anthology, [Goddesses in World Culture](#). Kelley is a mother, eldest sister, mountain woman, part mermaid, periodic poet, player in mythic theater and drama therapies, yogini and artist. After 19 years in St. John, Virgin Islands, she has returned north to the Green Mountains of Vermont.

*I so enjoy my never-ending astrology studies, which bring a soul-stirring sensation of being 'seen' by and feeling like a drop in the cosmic ocean. I look forward to talking with you.*

*"The reading we did many moons ago has turned out to be very accurate in addition to being so deep and thought-provoking." --M.F., Pennsylvania*

*"As always, thank you once again for sharing your unique gift with me. The tape I received has revealed something new each time I've listened to it. It continues to benefit me and has already helped me focus on certain issues."--B.A., Georgia*

*"I really enjoyed the reading you did for me. You are very skilled in your knowledge and ability to communicate. And you have a great voice. This has opened up a wonderful, empowering validating realm for me. Thank you!" --L.S., Michigan*

*"Thank you again for bringing so much awareness into my life, at the time I needed it the most." S.A., Australia*

[kelly@heliastar.com](mailto:kelly@heliastar.com)      [www.heliastar.com](http://www.heliastar.com)  
FB: [Kelley Hunter, AstroMythology](#), [StarLady](#) on GAB