

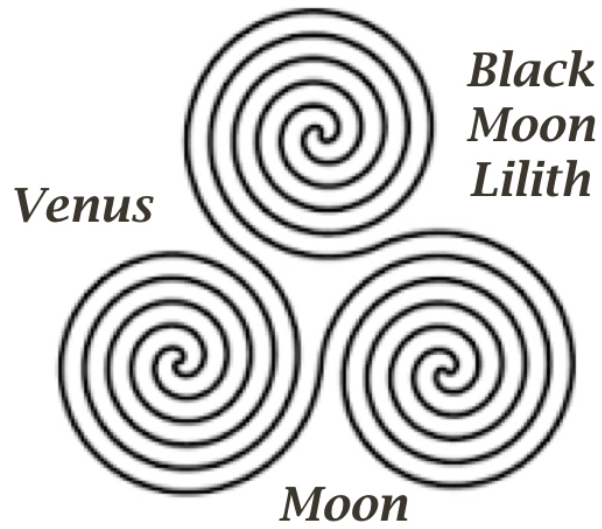
***The Cosmic Feminine***  
***\*Moon, Venus, Black Moon Lilith\****  
***Three Essential Aspects***



***An Invitation to Deeper Resonance in Your Life***  
***Exploring Dimensions of Feminine Consciousness***

***M Kelley Hunter, Ph.D., C.A.P.***  
***Astro-Mythologist***

***<http://heliastar.com/cosmic-feminine/>***  
***Three aspects of the feminine quality of self-awakening***  
***in both women and men***



*The magnetic quality of the feminine in men and women complements masculine initiative, weaving our personal wholeness for fulfillment in life and relationships*



The ***Divine Feminine*** is rising in our collective consciousness. Through each of us, she embodies the power of birth and rebirth, awakening and transforming, sometimes in ways that challenge our values and experience. We sense this in so many ways. How are you feeling her presence?

There are many faces of the cosmic feminine. This is an introduction to three basic aspects of goddess spirituality:

The foundational ***Moon*** describes our basic mother/family matrix that sets up our automatic, subconscious programming and self-identity.

Our ***Venus*** heart intelligence continually enhances our emotional experience and personal love quotient, as we appreciate and create beauty in our lives.

***Black Moon Lilith*** is mysterious, elusive and increasingly compelling as she deftly touches into deep soul desires, stirring subtle nuances that challenge the ego and free us to express the unique brilliance of our personal essence.

Each of these factors, separately and together, offers insights into your unique path of self-awakening. This is not a sequential path of development; rather it conveys particulars about your personal dance with the goddess, with considerable impact on the choices you make in your life and relationships.

The Moon, Venus and Black Moon Lilith are found in your cosmic blueprint. A revealing story is told by each one on its own terms and how they are related to each other around the sky of your birth. We can track their cycles through the years, noting times that signify a shift in awareness, new experiences, personal growth or a moment of destiny.



### *OUR MOON SELF, Nature and Nurture*

The Moon is, first, the mother through whom we are born. She carries us in her womb, where our bodies are formed into amazingly complex human beings. As we imbibe nourishment from the placenta and umbilical cord, we also take in impressions, first from our mother's body, such as her heartbeat, the rhythms of her movement, the timbre of her voice, emotions and feelings, and second, from other events in the environment. These make a large impact. Then we are born.

The Moon represents our birth experience, how we are received into the world. The Moon describes the family nest in which we are further nurtured—or not. We are impressed with patterns of behavior as our ego identity is formed from interactions with our caretakers and family members. The Moon represents our ancestral DNA, what is handed down through the generations and our role in it. The Moon stores memories and early, pre-verbal impressions that form our idea of who we are (ego), of our basic needs and comfort level, our subconscious, our matrix of automatic reactions. The Moon imprints our biological rhythms, determining how we grow, how we eat and even how we breathe. Women have a special psychosomatic, body-mind attunement to the Moon, through the menstrual cycle.

The basic underlying patterns of our lunar personality and self-identity run us most of the time. As we gain self-awareness through life experiences and from inner impulses, we can start to perceive these patterns—how they work for our growth or how they can hold us back.

The Moon is our own experience as a mother or caregiver. When one becomes a parent, innate parental tendencies emerge, naturally based on childhood experiences. Family patterns tend to repeat automatically. The Moon is the basic matrix. These largely unconscious patterns alter as we grow emotionally, incorporating enriching aspects of ourselves and a fuller sense of who we are.



### **OUR VENUS SELF, Heart Intelligence**

Moon is Mother, Venus is Lover. Venus activates our emotional intelligence, reflecting our sense of self-esteem and self love, values and aesthetics. Venus is the beauty path, guiding what we like, how we dress and decorate ourselves. She influences our use of money and resources, where we place value. As the Goddess of Love, Venus guides our relational style and choices—who we are attracted to and who we attract. Venus wrote that famous "Law of Attraction." She wants us to be happy, satisfied, delighted, joyful.

On one level, Venus (and Mars, the complement of Venus) turn on with hormones in our pre-teen years. Ideally, we develop Martian strength and vitality along with Venusian social skills, empathy, aesthetics and personal values. Artistic mediums educate our aesthetic appreciation and help us absorb, process and express emotional meaning in our experience.

The self-esteem of young women and men can become stifled during these years. Culturally-imposed gender role models often set expectations and limitations on possibilities in life. Venus intelligence is stunted, evoking negative emotional states such as lack of self worth, jealousy, envy, spite, capriciousness and greed that undermine our well-being and compromise our happiness and fulfillment in love and life.

The best of Venus enriches us emotionally, highlighting quality and pleasure in our experience. The highly aesthetic cycle of planet Venus spends extra time in 5 star signs every 8-years, its track tracing a 5-pointed star in the sky. This repeating journey is like a flower that unfurls with a particular personal invitation that draws you into the secret garden of your heart where deeper joy and love are found.



### **OUR LILITH SELF, Soul Desire**

There is a deeper Self beyond the basic needs of our Moon and the emotional pleasure of Venus. Deep in our soul, there is a profound yearning for the divine. The Black Moon or Lilith self doesn't attend to our comfort level like the Moon or our personal happiness like Venus. Lilith evokes the deep desire of our soul to embody the authentic, spiritual Self. Beyond any religious beliefs or spiritual philosophy, Lilith pushes you farther and deeper into the hidden aspects of yourself—into pure experience that can take you beyond what feels safe. The unknown feels dangerous, even as it entices with a compelling allure.

Lilith evokes the primordial, sacred, secreted feminine. Trailing smoky scandal and an ambiguous reputation as seductive witch, death hag or vampire queen, Lilith was known as the first wife of Adam, who left her because he wanted to be in charge. She returned to the Garden of Eden as a woman-headed serpent who gave Eve the apple, whispering, "There are things you need to know." For centuries, she has continued to excite artists and our collective imagination with her mystery. Is she angel or demon? She is an ego-buster who exposes cherished illusions of the false self. She entices us beyond limitations that imprison the soul into an impersonal field of being, the bliss of pure consciousness.

Wow, that's big, especially when our little self ego, keeps tripping us up, with its fears and resistances. Black Moon, Black Madonna Lilith looks us right in the eye, to face us with our fears, our demons and dragons—without judgment. "It is as it is." As you begin to watch the play of your life, you lift into a higher consciousness into the witness mind, detaching from your smaller self. Your Field of Being shifts and your life unfolds with more spaciousness, authenticity and grace.

## ***More about Black Moon Lilith***

*“It is as though the moon threw a black body upon earth visible only to the subliminal senses, which thereby became illuminated.”*

—Peter Redgrove, *The Black Goddess and the Unseen Real*



New to many, Black Moon Lilith is an intriguing, mysterious, fascinating energy that is eliciting increasing interest. Not a physical body, the Black Moon is the second focal point of the Moon's elliptical orbit around Earth (the Earth is the first), thus intimately bound with incarnation. Like an aetheric force field, it stirs up a whirlpool of deep karmic mysteries that can unbind and free the soul to merge with spirit. Its complex movement is elusive to pinpoint. Black Moon's movement is measured in two ways: by its mean, average motion, and by its true, belly dancer gyrations, giving two thresholds into her subtle mysteries.

*She “perceives with an objectivity like that of nature itself and our dreams, boring into the soul to find the naked truth, to see reality beneath all its myriad forms and the illusions and defenses it displays.”*

—Sylvia Perera, *Descent to the Goddess*

## *How these three aspects influence our relationships*



*The symbol of the Vesica Piscis shows two circles that intersect each other's center, creating a shared space of union, a beautiful symbol of relationship.*

### **Moon-based Relationships**

are likely to mirror original family patterns and unconscious inner needs, with levels of dependency. Such relationships most often focus on home and parenting, care-giving and emotional comfort.

### **Venus-based Relationships**

join the archetypal dance of male/female seeking happiness, satisfaction, pleasure and other delights of love. Projection onto the partner mirrors our inner male/female dynamic, heightening self awareness. Through darkness and light we learn to love more truly and deeply, both self and lover.

### **Black Moon Lilith-based Relationships**

evoke a soul bond, touching into compelling places of agony and ecstasy, pushing boundaries. Lilith insists that we explore beyond conventional bounds, allowing the relationship to evolve into its authentic form. Withdrawing projections evokes an impersonal quality that draws forth the essential vibrancy of soul. Beyond comfort and security or even emotional happiness, the interplay may be hurtful, dark, edgy, even obsessive, forcing deeper self-awareness and clarity.

Again, all three of these factors are present in any relationship and influence each other. Often one factor or another will predominate as the core connection. This may change over time, or change for one partner in ways that inevitably impact the other and challenge the relationship.

*“Love so activates the possibilities of self-knowledge  
that an entire universe heretofore unknown offers itself  
to the wide and curious eyes of the lover, a spark of the infinite.”*  
—Aldo Carotenuto, *Eros and Pathos: Shades of Love and Suffering*

## *Exploring Your Cosmic Feminine Path*



Begin your exploration into the Cosmic Feminine by locating these three essential factors in your chart/your life. If you know your astrology, you can use the worksheet on the next page and write some notes about your experience. I would be happy to work with you and support you on your journey.

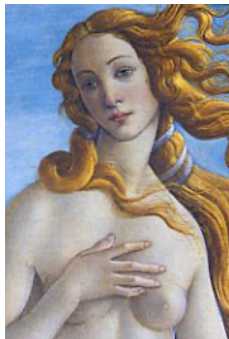
You don't need to know any astrology to explore how each factor is present in your life experience. A story is told by each aspect on its own terms. Your birth chart reveals how they relate to each other. You can track their cycles through the years, noting times that signify a shift in awareness, a challenge, new experiences, personal growth, or a moment of destiny. Especially if you would like to trace and push through obstacles that you feel have held you back or caused setbacks in relationships and self-esteem, this work can help you see through and release such blocks. Spiritual qualities of your inherent nature come alive with a radiant vibrancy that shines through your personality and presence. Something deep and true and often hidden about our Selves:

*"develops and matures as more experiences are metabolized...  
Life become rich with the profundity, the beauty and joy of essential life."  
—A.H. Almaas, *The Pearl Beyond Price**

*"Our deeply personal feelings are so incredibly valuable  
that we should preserve them, using their energy to find  
the universal emotional of the universe behind them...  
When we see that is the universal emotion emerging within us, we can  
follow the emotion of our personal heart into the whole, One Heart."  
—Puran Bair, *Living from the Heart**

# Your Cosmic Feminine Astrology

Where are these factors in your cosmic blueprint?



**☾ Moon** — Mother, womb experience, personal needs, growth cycles, subjectivity, family patterns/ impressions that shape self-identity.

My Moon sign is: \_\_\_\_\_  
How I experience my Moon \_\_\_\_\_  
\_\_\_\_\_  
\_\_\_\_\_

**♀ Venus** — Love, art, beauty, magnetism, personal and relational style, values, aesthetics, self-esteem, emotional intelligence.  
For a woman, her experience of being female.  
For a man, his inner woman, what he looks for in a woman.

My Venus sign is: \_\_\_\_\_  
How I experience my Venus \_\_\_\_\_  
\_\_\_\_\_  
\_\_\_\_\_

**♁ Black Moon Lilith** — Soul desires, urge toward spiritual liberation, authenticity, aetheric energy, ego interference, personal brilliance

My Black Moon sign(s): mean \_\_\_\_\_ true \_\_\_\_\_  
How I experience my Black Moon: \_\_\_\_\_  
\_\_\_\_\_  
\_\_\_\_\_



***M. Kelley Hunter, Ph.D., C.A.P.,***

is an internationally respected astrologer and mythologist. Studies in psychology, holistic healing, unified field physics, and over 1001 stargazing nights enrich her teaching and consultation work. She is author of two books on Lilith (see below), [\*Planetary Gods and Goddesses Coloring Book\*](#) and contributor to the anthology, [\*Goddesses in World Culture\*](#). She sends out Cosmic Inspiration News on New and Full Moons. Find out more on her website. She is a mother, eldest sister, mountain woman, part mermaid, periodic poet, player in mythic theater and drama therapies, yogini and artist. After many years in the Virgin Islands, she has returned to the Green Mountains of Vermont.

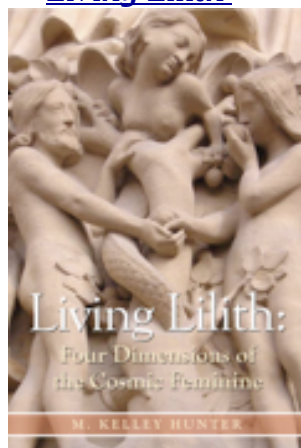
***"I am continually inspired by astrology and feel so fortunate that I found it early in my life. This living symbolic language shows how we are intimately connected with the greater cosmos. Our lives unfold in synch with celestial cycles. Astrology offers insights and practical guidance as we live the universal, mythic stories in the stars."***

*"She affirms that small, still voice we all have within us, helping to clarify and amplify it as we become more receptive to that which we already are."* —Emily, educator, NC

*"Kelley raises your awareness with simple conversation and draws things out of you that will surprise and relieve you."* —Tom, leadership coach, CT

*"I love your generosity of heart and spirit in your analysis of people's lives/charts. It is a therapeutic reframing that is really a balm for the soul in its worldly adventures."* —Carol, RN, Pennsylvania

***Living Lilith***



***Black Moon Lilith***



**Contact Kelley at:**

**[kelly@heliastar.com](mailto:kelly@heliastar.com)**

**[www.heliastar.com](http://www.heliastar.com)**